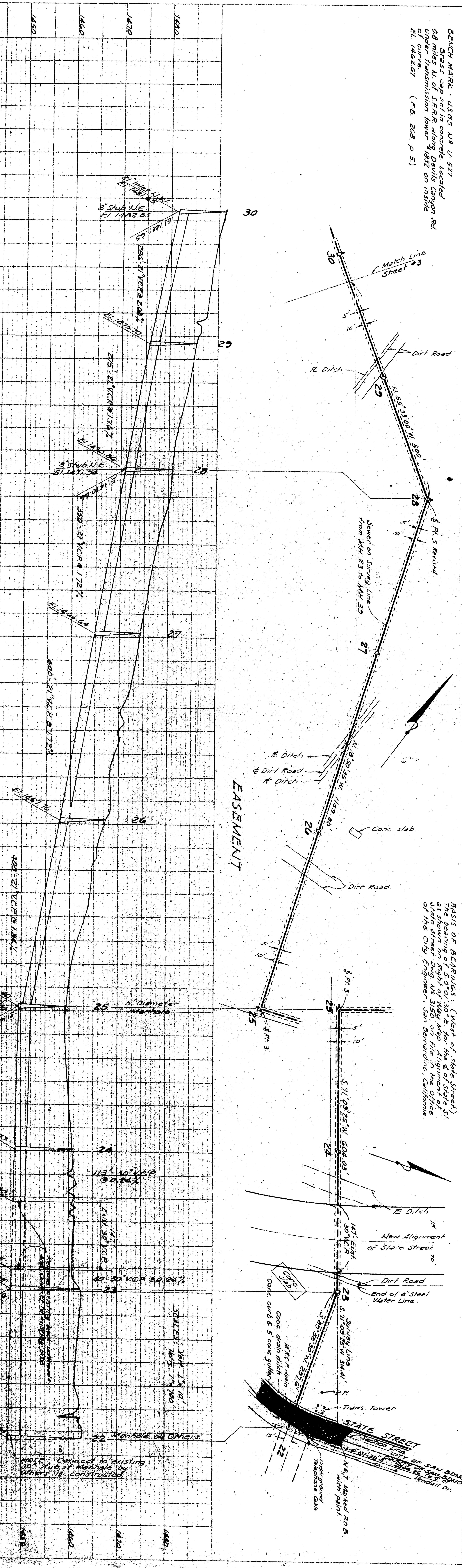


NOTE BOOK: GRADE SHEET  
 No. 1  
 STRUCTURE INDICATIONS: EASEMENT

BENCH MARK - USGS 118 U-317  
 0.8 miles N. of S.F.P.R. along Davis Canyon Rd.  
 under Transmission Tower 9/18/32 on inside  
 of fence (F.S. 268 p. 5)

BASIS OF MEASUREMENTS (West of State Street)  
 The bearing of S 70° 01' 50" E for the E. of State St.  
 is shown on right of map with alignment of  
 of the City Engineer, San Bernardino, California.

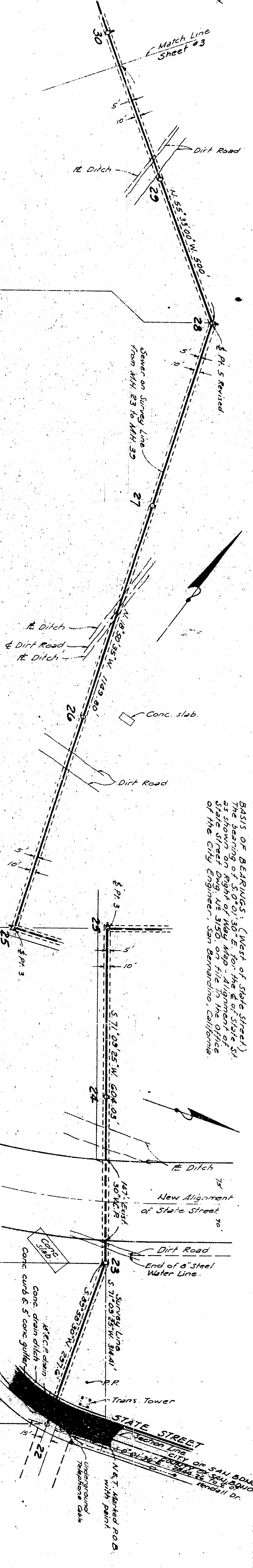


EASEMENT

PLATE SHOWING PLAN, PROFILE, & ELEVATION  
 L. L. BROWN COMPANY, INC.

PLANS & PROFILES INTERESTING STRUCTURES  
 SAN BERNARDINO COUNTY ENGINEER  
 1932

NOTE: Corrected to existing  
 30' wide of roadway by  
 others to be constructed.



STATE STREET  
 14.5' finished P.O.B.  
 14.5' finished P.O.B.  
 14.5' finished P.O.B.  
 14.5' finished P.O.B.